

# Bus Stops, Population, and Incomes

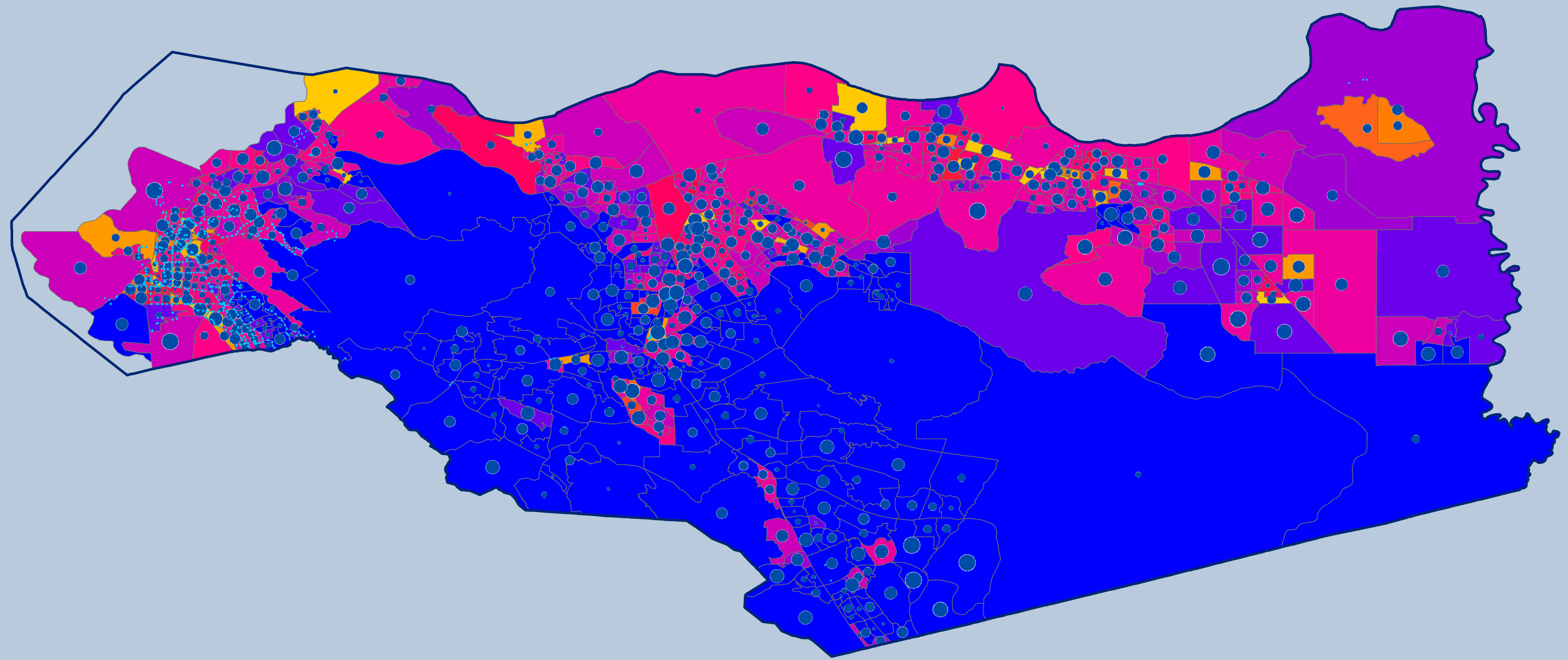
An investigation of  
the three East Bay Counties --  
Contra Costa, Alameda, and Santa Clara

Prepared for GEOG 15 on 2019-05-20  
at Las Positas College

All map design by Mari Hsu

All content in this presentation, except where specified, is licensed CC-BY

# Contra Costa County



0 15 30 60 Miles

County Border

Bus Stops

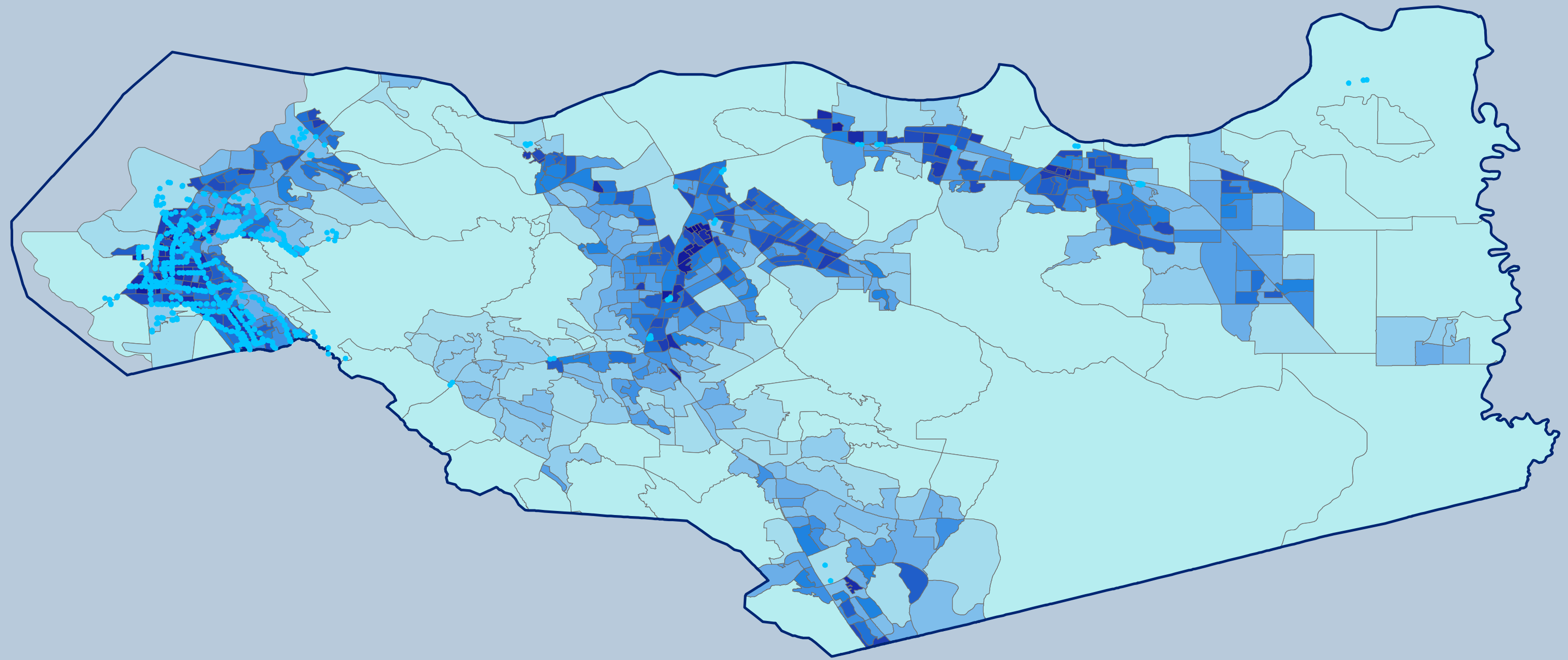
## Average Income

- 13.60 - 30.67
- 30.68 - 41.27
- 41.28 - 52.07
- 52.08 - 63.13
- 63.14 - 75.93
- 75.94 - 91.93
- 91.94 - 110.80
- 110.81 - 139.13
- 139.14 - 179.93
- 179.94 - 332.07

## Income Bracket (Mode)

- |   |   |
|---|---|
| <span style="display: inline-block; width: 15px; height: 15px; background-color: yellow; border: 1px solid black;"></span> > 10       | <span style="display: inline-block; width: 15px; height: 15px; background-color: magenta; border: 1px solid black;"></span> 100 - 124.9 |
| <span style="display: inline-block; width: 15px; height: 15px; background-color: orange; border: 1px solid black;"></span> 10 - 14.9  | <span style="display: inline-block; width: 15px; height: 15px; background-color: purple; border: 1px solid black;"></span> 125 - 149.9  |
| <span style="display: inline-block; width: 15px; height: 15px; background-color: #FFA500; border: 1px solid black;"></span> 15 - 19.9 | <span style="display: inline-block; width: 15px; height: 15px; background-color: blue; border: 1px solid black;"></span> 150 - 199.9    |
| <span style="display: inline-block; width: 15px; height: 15px; background-color: #FF8C00; border: 1px solid black;"></span> 20 - 24.9 | <span style="display: inline-block; width: 15px; height: 15px; background-color: #0000FF; border: 1px solid black;"></span> 200 +       |
| <span style="display: inline-block; width: 15px; height: 15px; background-color: #FF6900; border: 1px solid black;"></span> 25 - 29.9 |   |
| <span style="display: inline-block; width: 15px; height: 15px; background-color: #FF4500; border: 1px solid black;"></span> 30 - 34.9 |   |
| <span style="display: inline-block; width: 15px; height: 15px; background-color: #FF0000; border: 1px solid black;"></span> 35 - 39.9 |   |
| <span style="display: inline-block; width: 15px; height: 15px; background-color: #FF0000; border: 1px solid black;"></span> 40 - 44.9 |   |
| <span style="display: inline-block; width: 15px; height: 15px; background-color: #FF0000; border: 1px solid black;"></span> 45 - 49.9 |   |
| <span style="display: inline-block; width: 15px; height: 15px; background-color: #FF0000; border: 1px solid black;"></span> 50 - 59.9 |   |
| <span style="display: inline-block; width: 15px; height: 15px; background-color: #FF0000; border: 1px solid black;"></span> 60 - 74.9 |   |
| <span style="display: inline-block; width: 15px; height: 15px; background-color: #FF0000; border: 1px solid black;"></span> 75 - 99.9 |   |

# Contra Costa County

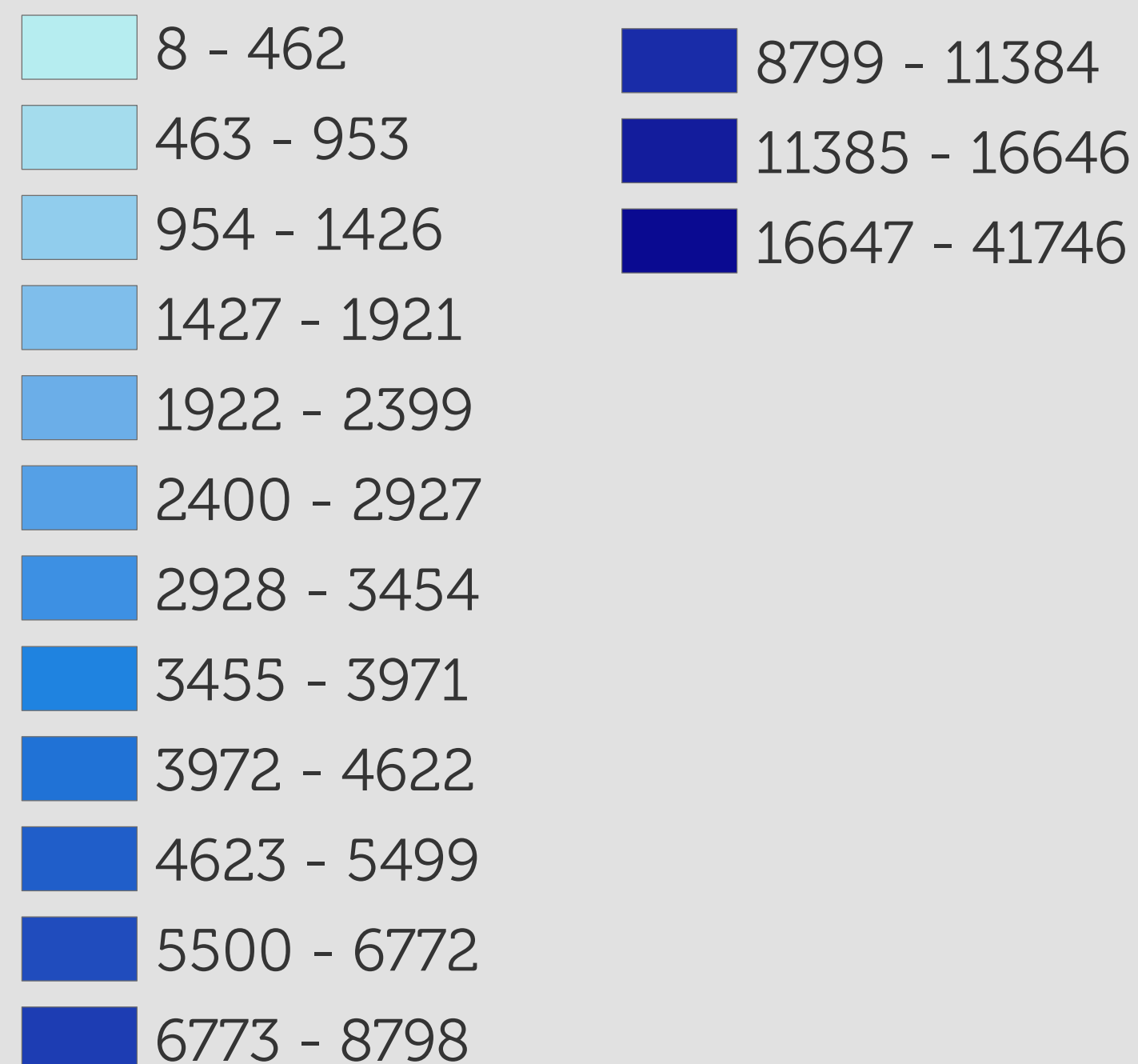


0 15 30 60 Miles

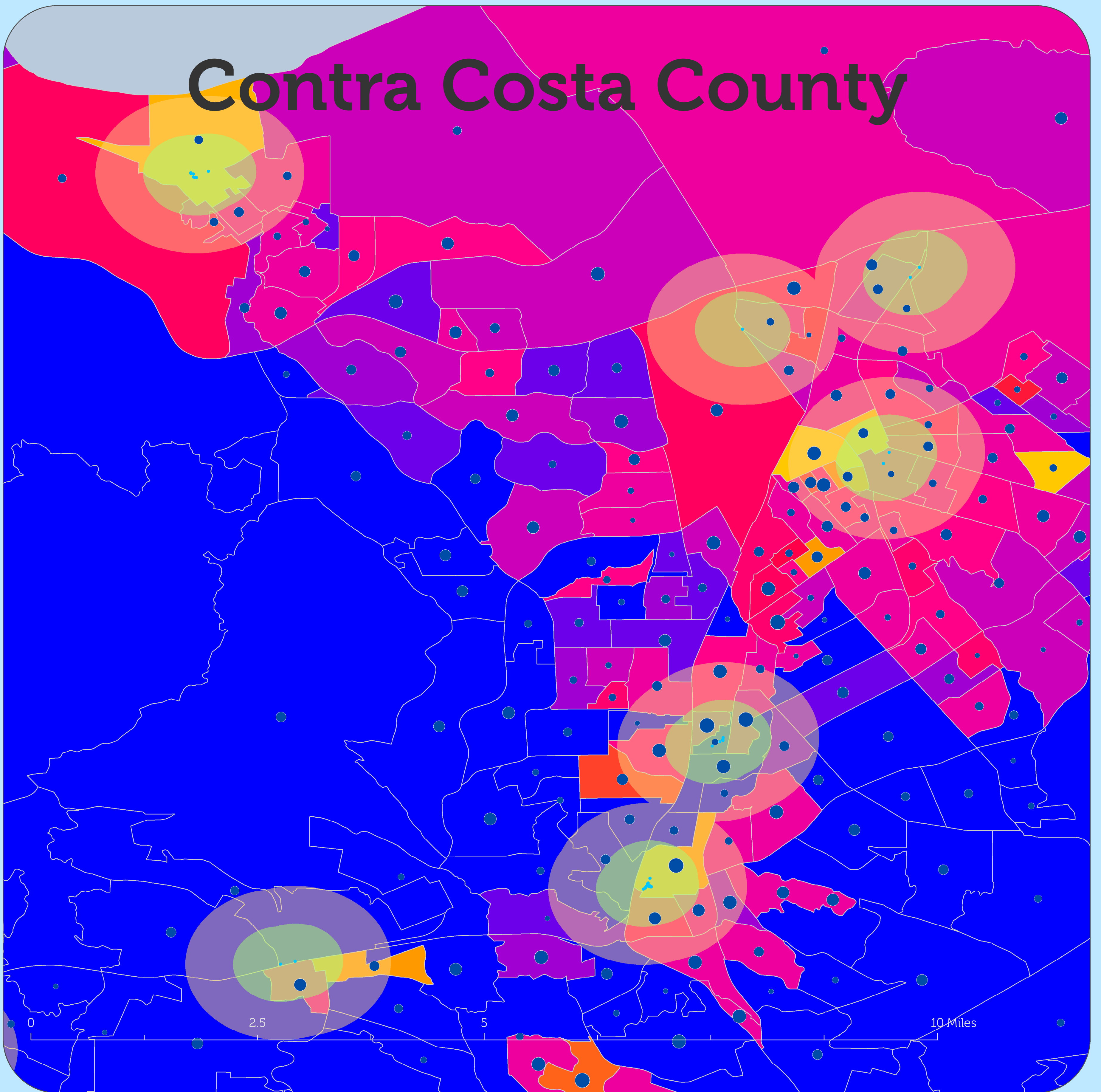
 County Border

 Bus Stops

## Population Density



# Contra Costa County



- 10 minute walk (2200 ft)
- 20 minute walk (4400 ft)

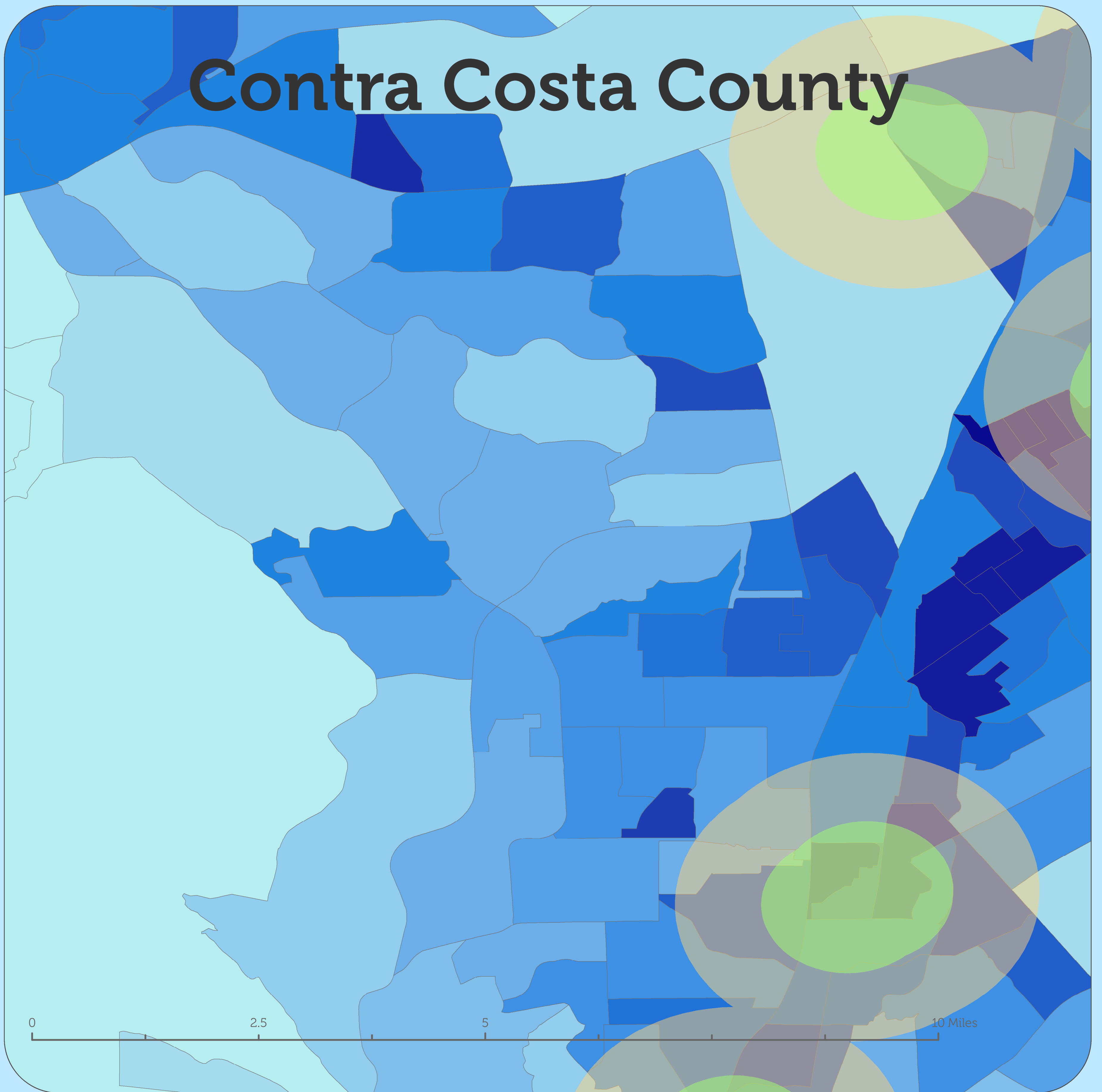
## Average Income

- 13.60 - 30.67
- 30.68 - 41.27
- 41.28 - 52.07
- 52.08 - 63.13
- 63.14 - 75.93
- 75.94 - 91.93
- 91.94 - 110.80
- 110.81 - 139.13
- 139.14 - 179.93
- 179.94 - 332.07

## Income Bracket (Mode)

- |  |  |
|--|--|
| <span style="display: inline-block; width: 15px; height: 10px; background-color: #FFD700; border: 1px solid black; margin-right: 5px;"></span> > 10      | <span style="display: inline-block; width: 15px; height: 10px; background-color: #FF00FF; border: 1px solid black; margin-right: 5px;"></span> 100 - 124.9 |
| <span style="display: inline-block; width: 15px; height: 10px; background-color: #FFA500; border: 1px solid black; margin-right: 5px;"></span> 10 - 14.9 | <span style="display: inline-block; width: 15px; height: 10px; background-color: #800080; border: 1px solid black; margin-right: 5px;"></span> 125 - 149.9 |
| <span style="display: inline-block; width: 15px; height: 10px; background-color: #FF8C00; border: 1px solid black; margin-right: 5px;"></span> 15 - 19.9 | <span style="display: inline-block; width: 15px; height: 10px; background-color: #4B0082; border: 1px solid black; margin-right: 5px;"></span> 150 - 199.9 |
| <span style="display: inline-block; width: 15px; height: 10px; background-color: #FF4500; border: 1px solid black; margin-right: 5px;"></span> 20 - 24.9 | <span style="display: inline-block; width: 15px; height: 10px; background-color: #0000FF; border: 1px solid black; margin-right: 5px;"></span> 200 +       |
| <span style="display: inline-block; width: 15px; height: 10px; background-color: #FF4500; border: 1px solid black; margin-right: 5px;"></span> 25 - 29.9 |  |
| <span style="display: inline-block; width: 15px; height: 10px; background-color: #FF0000; border: 1px solid black; margin-right: 5px;"></span> 30 - 34.9 |  |
| <span style="display: inline-block; width: 15px; height: 10px; background-color: #FF0000; border: 1px solid black; margin-right: 5px;"></span> 35 - 39.9 |  |
| <span style="display: inline-block; width: 15px; height: 10px; background-color: #FF0000; border: 1px solid black; margin-right: 5px;"></span> 40 - 44.9 |  |
| <span style="display: inline-block; width: 15px; height: 10px; background-color: #FF0000; border: 1px solid black; margin-right: 5px;"></span> 45 - 49.9 |  |
| <span style="display: inline-block; width: 15px; height: 10px; background-color: #FF0000; border: 1px solid black; margin-right: 5px;"></span> 50 - 59.9 |  |
| <span style="display: inline-block; width: 15px; height: 10px; background-color: #FF0000; border: 1px solid black; margin-right: 5px;"></span> 60 - 74.9 |  |
| <span style="display: inline-block; width: 15px; height: 10px; background-color: #FF0000; border: 1px solid black; margin-right: 5px;"></span> 75 - 99.9 |  |

# Contra Costa County

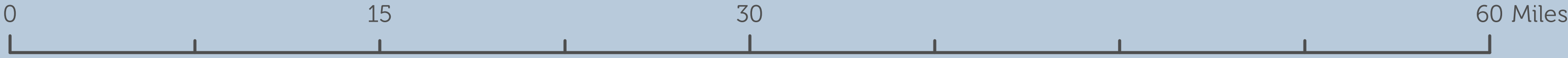
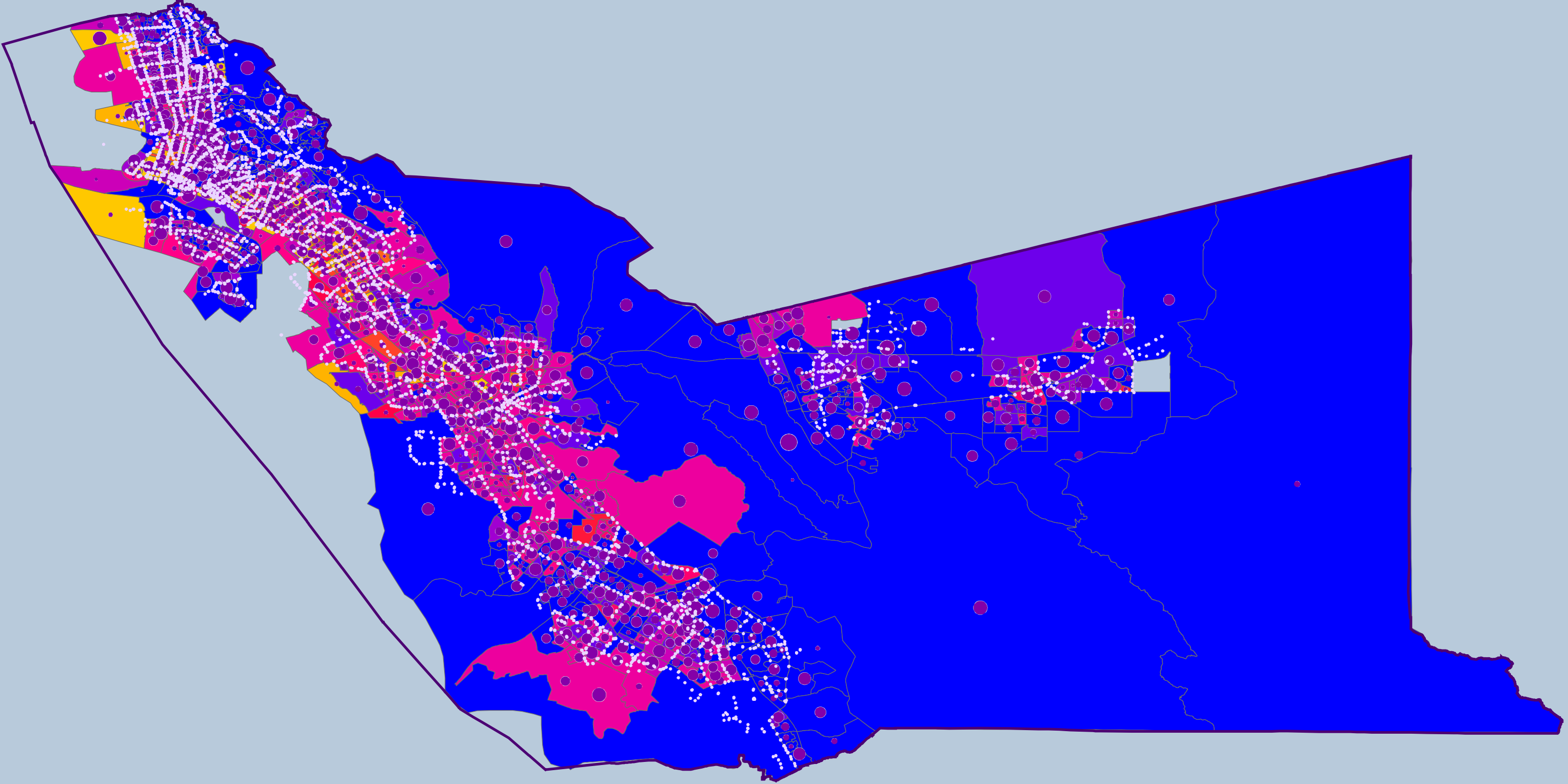


- 10 minute walk (2200 ft)
- 20 minute walk (4400 ft)

## Population Density

8 - 462	8799 - 11384
463 - 953	11385 - 16646
954 - 1426	16647 - 41746
1427 - 1921	
1922 - 2399	
2400 - 2927	
2928 - 3454	
3455 - 3971	
3972 - 4622	
4623 - 5499	
5500 - 6772	
6773 - 8798	

# Alameda County



County Border  
○ Bus Stops

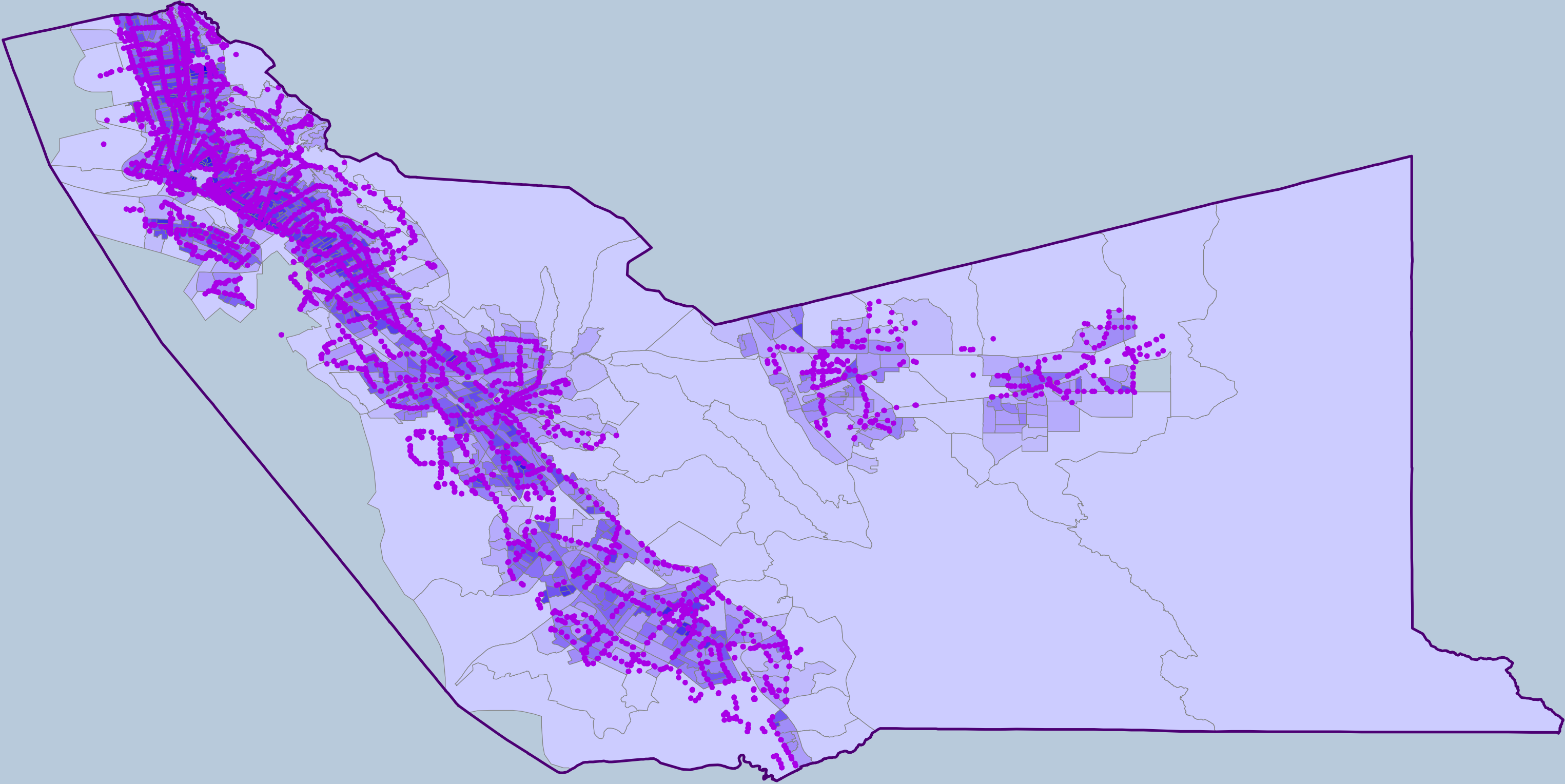
### Average Income

- 0.50 - 16.38
- 16.39 - 22.44
- 22.45 - 28.13
- 28.14 - 35.06
- 35.07 - 43.94
- 43.95 - 54.81
- 54.82 - 69.63
- 69.64 - 102.00
- 102.01 - 169.44
- 169.45 - 35566.88

### Income Bracket (Mode)

- |  |  |
|--|--|
| <span style="display: inline-block; width: 15px; height: 10px; background-color: yellow; vertical-align: middle;"></span> > 10       | <span style="display: inline-block; width: 15px; height: 10px; background-color: magenta; vertical-align: middle;"></span> 100 - 124.9 |
| <span style="display: inline-block; width: 15px; height: 10px; background-color: orange; vertical-align: middle;"></span> 10 - 14.9  | <span style="display: inline-block; width: 15px; height: 10px; background-color: purple; vertical-align: middle;"></span> 125 - 149.9  |
| <span style="display: inline-block; width: 15px; height: 10px; background-color: #FFA500; vertical-align: middle;"></span> 15 - 19.9 | <span style="display: inline-block; width: 15px; height: 10px; background-color: blue; vertical-align: middle;"></span> 150 - 199.9    |
| <span style="display: inline-block; width: 15px; height: 10px; background-color: #FF8C00; vertical-align: middle;"></span> 20 - 24.9 | <span style="display: inline-block; width: 15px; height: 10px; background-color: blue; vertical-align: middle;"></span> 200 +          |
| <span style="display: inline-block; width: 15px; height: 10px; background-color: #FF6900; vertical-align: middle;"></span> 25 - 29.9 |  |
| <span style="display: inline-block; width: 15px; height: 10px; background-color: #FF4500; vertical-align: middle;"></span> 30 - 34.9 |  |
| <span style="display: inline-block; width: 15px; height: 10px; background-color: #FF0000; vertical-align: middle;"></span> 35 - 39.9 |  |
| <span style="display: inline-block; width: 15px; height: 10px; background-color: #FF0000; vertical-align: middle;"></span> 40 - 44.9 |  |
| <span style="display: inline-block; width: 15px; height: 10px; background-color: #FF0000; vertical-align: middle;"></span> 45 - 49.9 |  |
| <span style="display: inline-block; width: 15px; height: 10px; background-color: #FF0000; vertical-align: middle;"></span> 50 - 59.9 |  |
| <span style="display: inline-block; width: 15px; height: 10px; background-color: #FF0000; vertical-align: middle;"></span> 60 - 74.9 |  |
| <span style="display: inline-block; width: 15px; height: 10px; background-color: #FF0000; vertical-align: middle;"></span> 75 - 99.9 |  |

# Alameda County

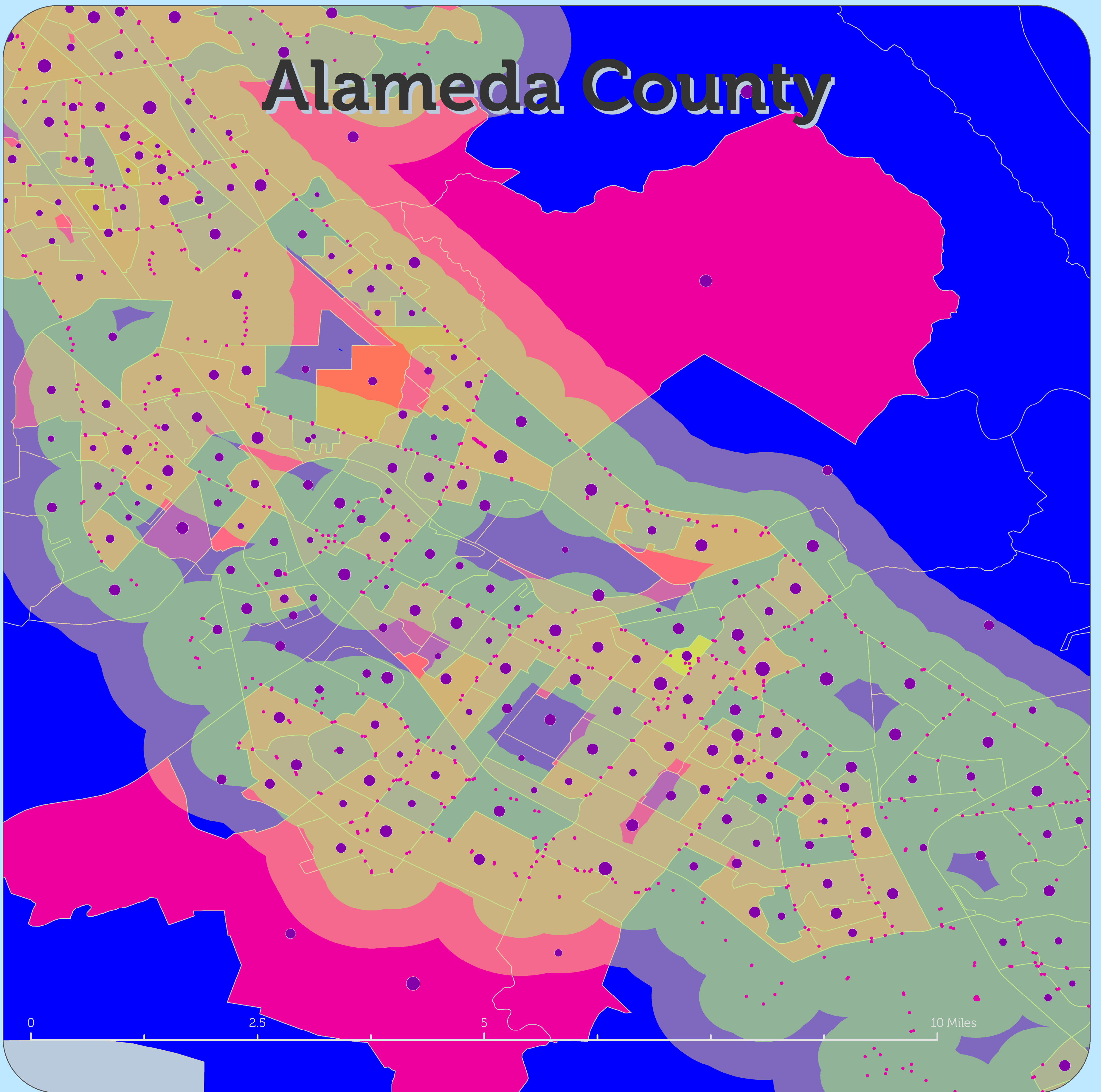


- County Border
- Bus Stops

### Population Density

4 - 918	18174 - 24269
919 - 1996	24270 - 38773
1997 - 3104	38774 - 57018
3105 - 4197	
4198 - 5187	
5188 - 6188	
6189 - 7331	
7332 - 8698	
8699 - 10312	
10313 - 12232	
12233 - 14695	
14696 - 18173	

# Alameda County



- 10 minute walk (2200 ft)
- 20 minute walk (4400 ft)

## Average Income

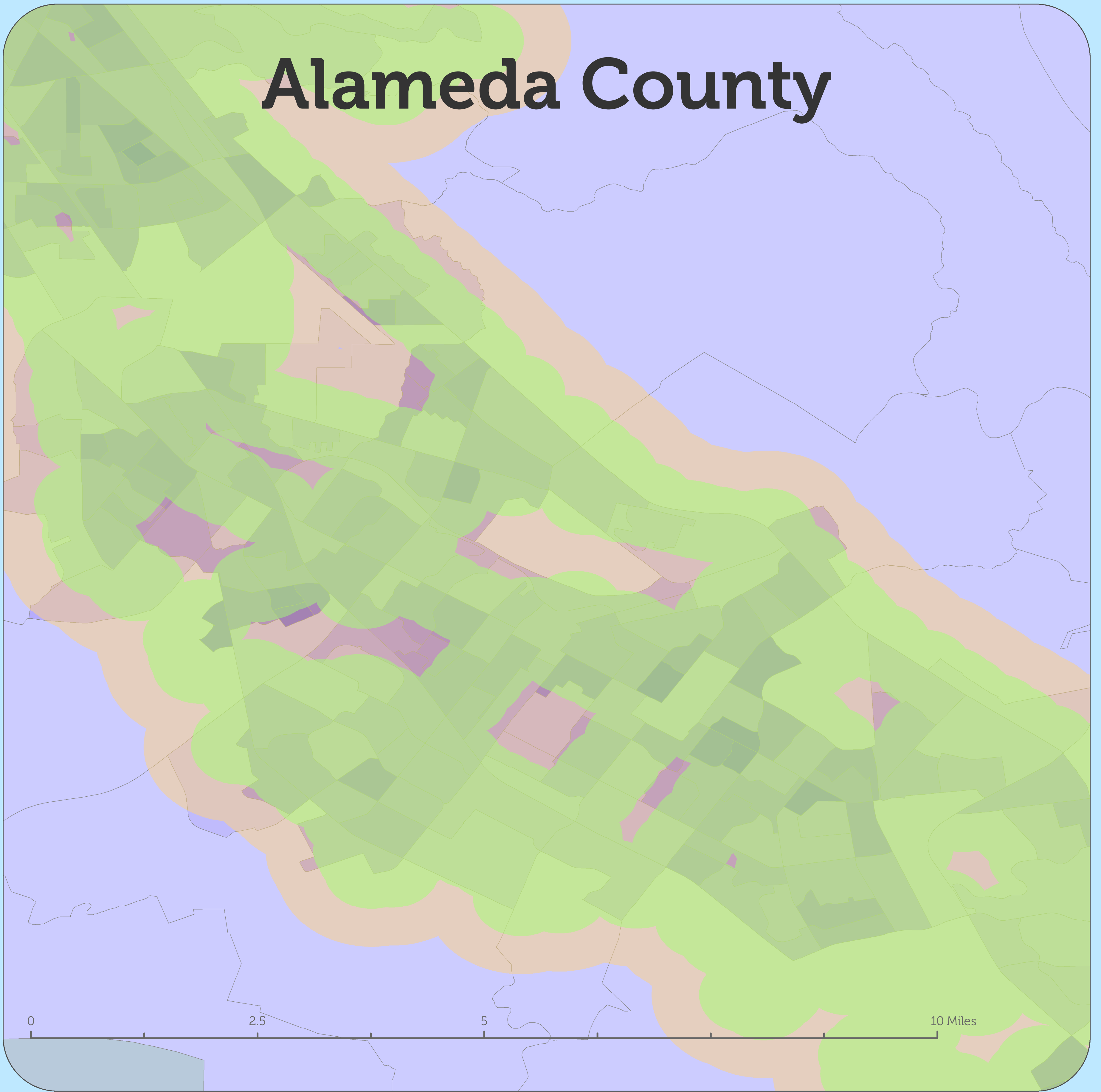
- 0.50 - 16.38
- 16.39 - 22.44
- 22.45 - 28.13
- 28.14 - 35.06
- 35.07 - 43.94
- 43.95 - 54.81
- 54.82 - 69.63
- 69.64 - 102.00
- 102.01 - 169.44
- 169.45 - 35566.88

## Income Bracket (Mode)

- |  |  |
|--|--|
| <span style="display: inline-block; width: 15px; height: 10px; background-color: #FFD700; border: 1px solid black; margin-right: 5px;"></span> > 10      | <span style="display: inline-block; width: 15px; height: 10px; background-color: #FF00FF; border: 1px solid black; margin-right: 5px;"></span> 100 - 124.9 |
| <span style="display: inline-block; width: 15px; height: 10px; background-color: #FFA500; border: 1px solid black; margin-right: 5px;"></span> 10 - 14.9 | <span style="display: inline-block; width: 15px; height: 10px; background-color: #800080; border: 1px solid black; margin-right: 5px;"></span> 125 - 149.9 |
| <span style="display: inline-block; width: 15px; height: 10px; background-color: #FF8C00; border: 1px solid black; margin-right: 5px;"></span> 15 - 19.9 | <span style="display: inline-block; width: 15px; height: 10px; background-color: #4B0082; border: 1px solid black; margin-right: 5px;"></span> 150 - 199.9 |
| <span style="display: inline-block; width: 15px; height: 10px; background-color: #FF4500; border: 1px solid black; margin-right: 5px;"></span> 20 - 24.9 | <span style="display: inline-block; width: 15px; height: 10px; background-color: #0000FF; border: 1px solid black; margin-right: 5px;"></span> 200 +       |
| <span style="display: inline-block; width: 15px; height: 10px; background-color: #FF0000; border: 1px solid black; margin-right: 5px;"></span> 25 - 29.9 |  |
| <span style="display: inline-block; width: 15px; height: 10px; background-color: #FF0000; border: 1px solid black; margin-right: 5px;"></span> 30 - 34.9 |  |
| <span style="display: inline-block; width: 15px; height: 10px; background-color: #FF0000; border: 1px solid black; margin-right: 5px;"></span> 35 - 39.9 |  |
| <span style="display: inline-block; width: 15px; height: 10px; background-color: #FF0000; border: 1px solid black; margin-right: 5px;"></span> 40 - 44.9 |  |
| <span style="display: inline-block; width: 15px; height: 10px; background-color: #FF0000; border: 1px solid black; margin-right: 5px;"></span> 45 - 49.9 |  |
| <span style="display: inline-block; width: 15px; height: 10px; background-color: #FF0000; border: 1px solid black; margin-right: 5px;"></span> 50 - 59.9 |  |
| <span style="display: inline-block; width: 15px; height: 10px; background-color: #FF0000; border: 1px solid black; margin-right: 5px;"></span> 60 - 74.9 |  |
| <span style="display: inline-block; width: 15px; height: 10px; background-color: #FF0000; border: 1px solid black; margin-right: 5px;"></span> 75 - 99.9 |  |



# Alameda County

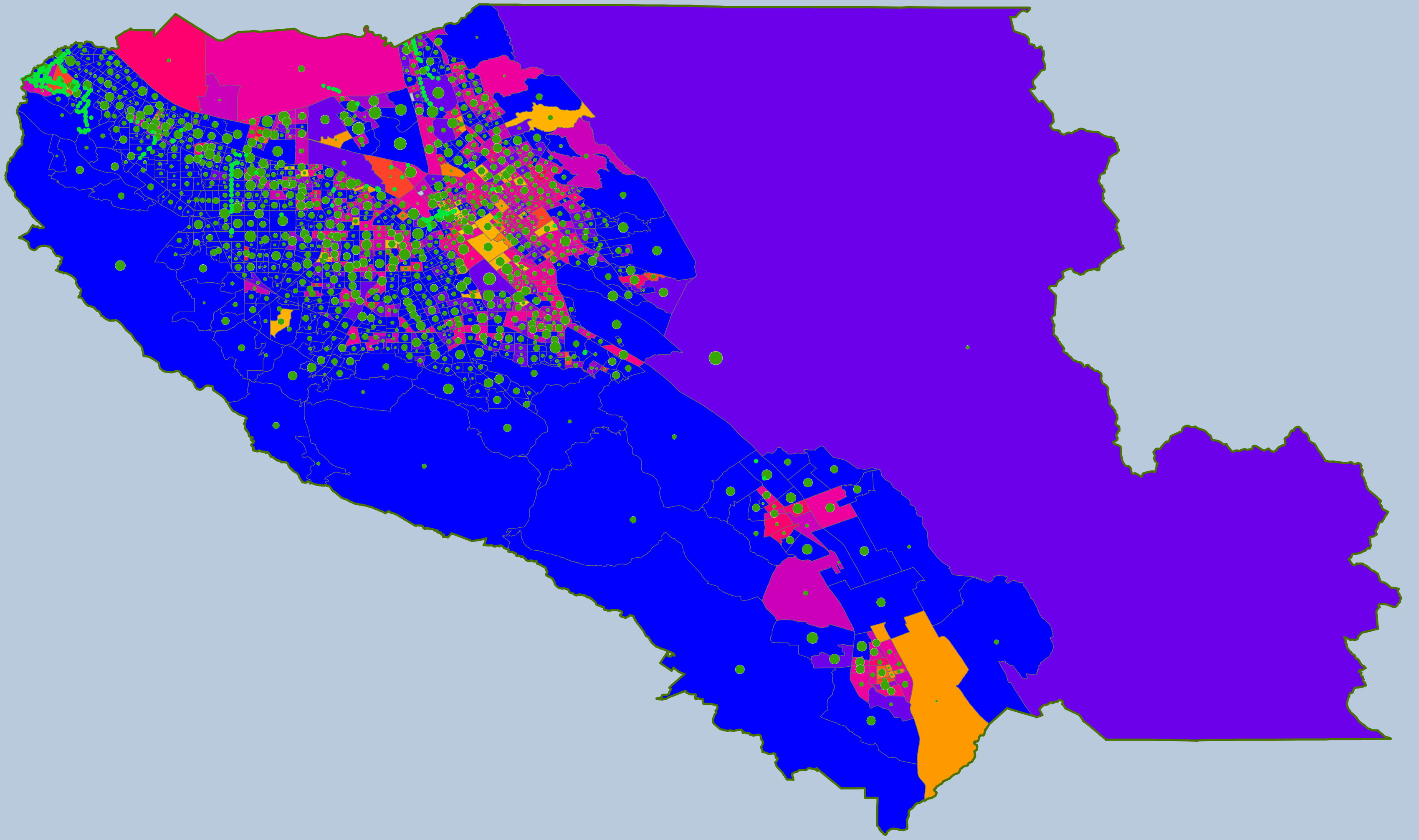


- 10 minute walk (2200 ft)
- 20 minute walk (4400 ft)

## Population Density

4 - 918	18174 - 24269
919 - 1996	24270 - 38773
1997 - 3104	38774 - 57018
3105 - 4197	
4198 - 5187	
5188 - 6188	
6189 - 7331	
7332 - 8698	
8699 - 10312	
10313 - 12232	
12233 - 14695	
14696 - 18173	

# Santa Clara County



0 15 30 60 Miles

County Border  
• Bus Stops

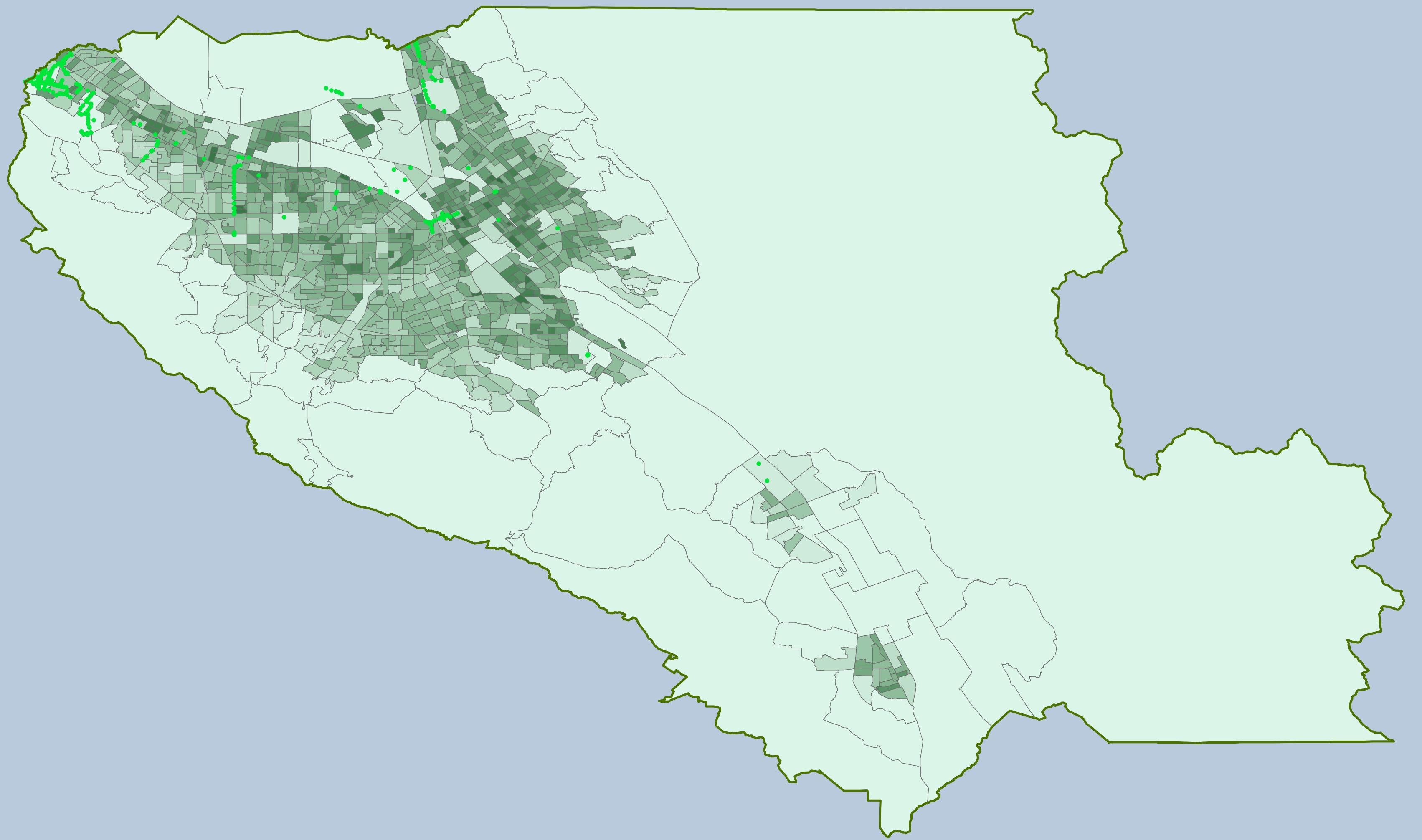
## Average Income

- 0.25 - 19.06
- 19.07 - 27.13
- 27.14 - 35.13
- 35.13 - 43.88
- 43.88 - 54.44
- 54.45 - 68.63
- 68.64 - 88.19
- 88.20 - 131.56
- 131.57 - 254.00
- 254.01 - 39403.19

## Income Bracket (Mode)

- |  |  |
|--|--|
| <span style="display: inline-block; width: 15px; height: 10px; background-color: yellow; vertical-align: middle;"></span> > 10       | <span style="display: inline-block; width: 15px; height: 10px; background-color: magenta; vertical-align: middle;"></span> 100 - 124.9 |
| <span style="display: inline-block; width: 15px; height: 10px; background-color: orange; vertical-align: middle;"></span> 10 - 14.9  | <span style="display: inline-block; width: 15px; height: 10px; background-color: purple; vertical-align: middle;"></span> 125 - 149.9  |
| <span style="display: inline-block; width: 15px; height: 10px; background-color: #FFA500; vertical-align: middle;"></span> 15 - 19.9 | <span style="display: inline-block; width: 15px; height: 10px; background-color: blue; vertical-align: middle;"></span> 150 - 199.9    |
| <span style="display: inline-block; width: 15px; height: 10px; background-color: #FF8C00; vertical-align: middle;"></span> 20 - 24.9 | <span style="display: inline-block; width: 15px; height: 10px; background-color: blue; vertical-align: middle;"></span> 200 +          |
| <span style="display: inline-block; width: 15px; height: 10px; background-color: #FF6900; vertical-align: middle;"></span> 25 - 29.9 |  |
| <span style="display: inline-block; width: 15px; height: 10px; background-color: #FF4500; vertical-align: middle;"></span> 30 - 34.9 |  |
| <span style="display: inline-block; width: 15px; height: 10px; background-color: #FF0000; vertical-align: middle;"></span> 35 - 39.9 |  |
| <span style="display: inline-block; width: 15px; height: 10px; background-color: #FF0000; vertical-align: middle;"></span> 40 - 44.9 |  |
| <span style="display: inline-block; width: 15px; height: 10px; background-color: #FF0000; vertical-align: middle;"></span> 45 - 49.9 |  |
| <span style="display: inline-block; width: 15px; height: 10px; background-color: #FF0000; vertical-align: middle;"></span> 50 - 59.9 |  |
| <span style="display: inline-block; width: 15px; height: 10px; background-color: #FF0000; vertical-align: middle;"></span> 60 - 74.9 |  |
| <span style="display: inline-block; width: 15px; height: 10px; background-color: #FF0000; vertical-align: middle;"></span> 75 - 99.9 |  |

# Santa Clara County

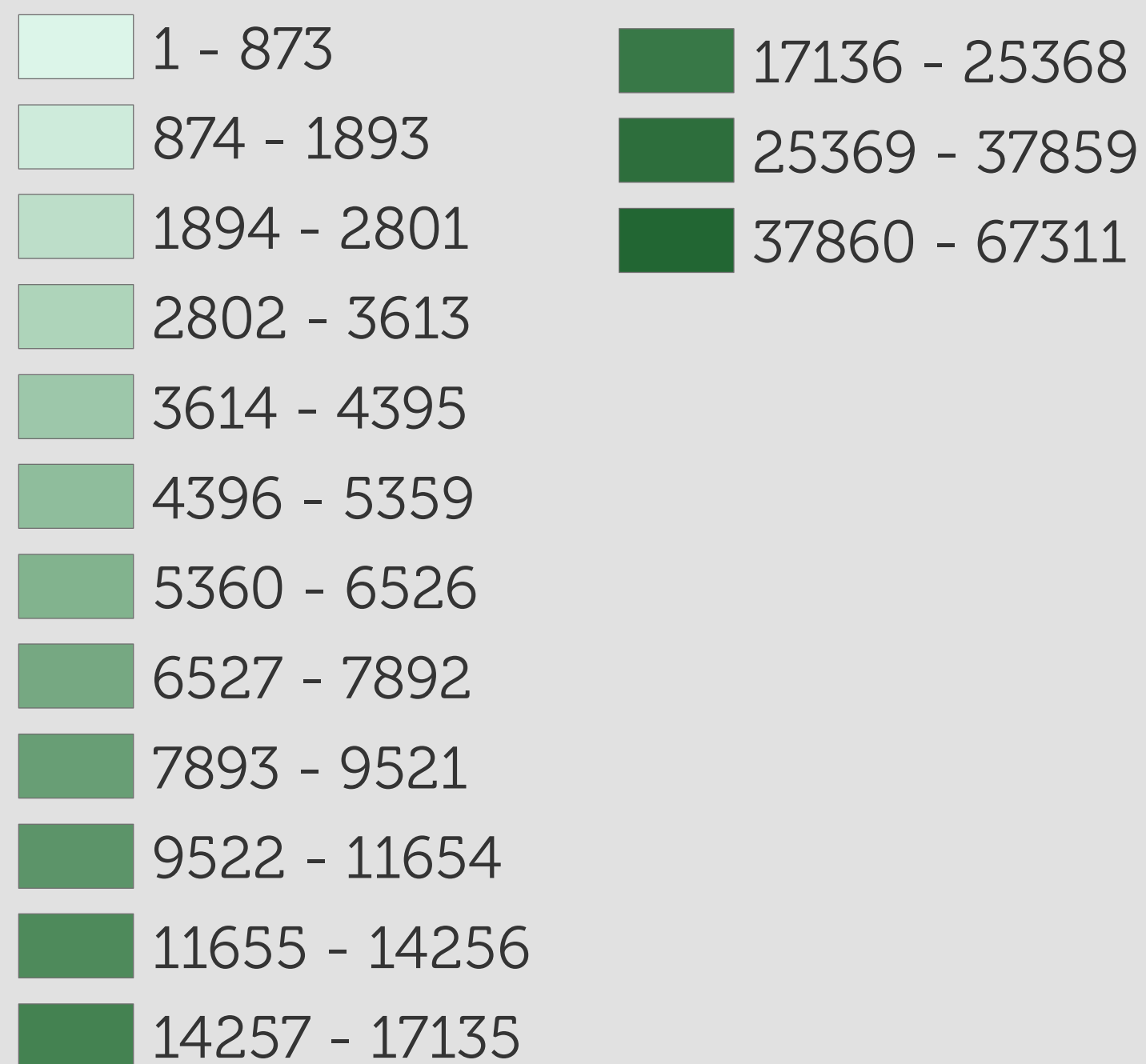


0 15 30 60 Miles

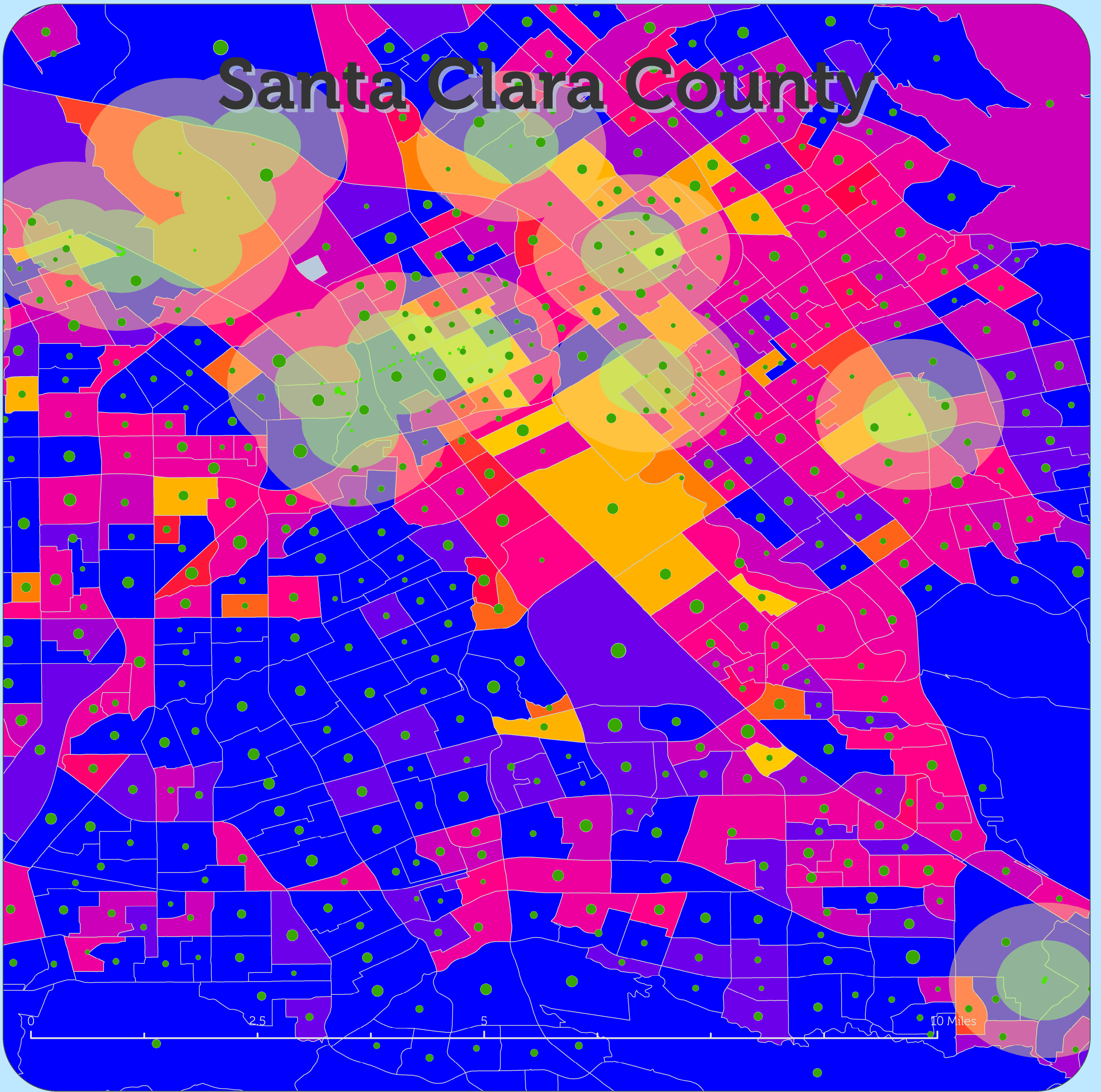
 County Border

 BusStops

## Population Density



# Santa Clara County



- 10 minute walk (2200 ft)
- 20 minute walk (4400 ft)

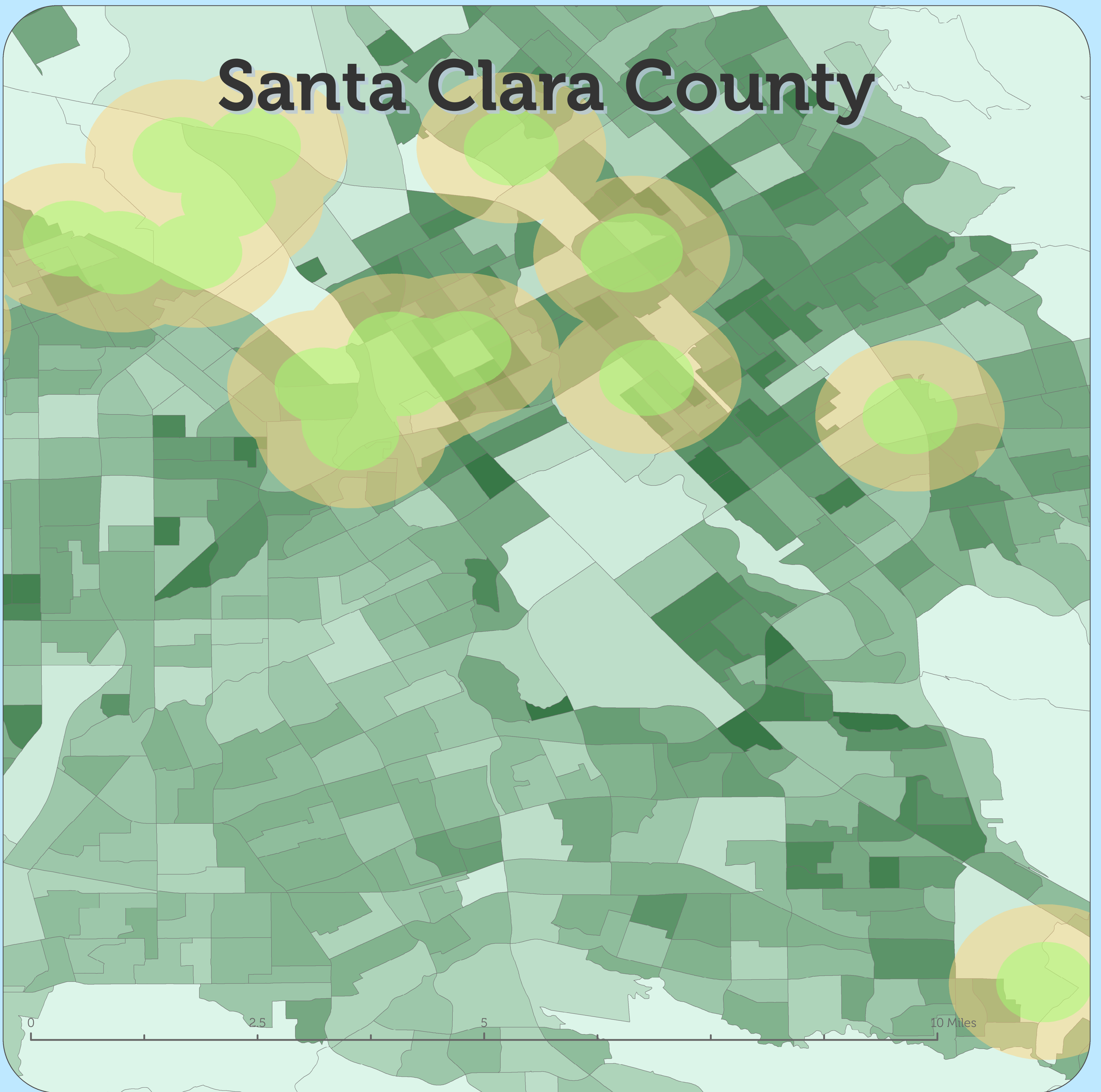
## Average Income

- 0.25 - 19.06
- 19.07 - 27.13
- 27.14 - 35.13
- 35.13 - 43.88
- 43.88 - 54.44
- 54.45 - 68.63
- 68.64 - 88.19
- 88.20 - 131.56
- 131.57 - 254.00
- 254.01 - 39403.19

## Income Bracket (Mode)

- |  |  |
|--|--|
| <span style="display: inline-block; width: 15px; height: 15px; background-color: #FFD700; border: 1px solid black; margin-right: 5px;"></span> > 10      | <span style="display: inline-block; width: 15px; height: 15px; background-color: #FF00FF; border: 1px solid black; margin-right: 5px;"></span> 100 - 124.9 |
| <span style="display: inline-block; width: 15px; height: 15px; background-color: #FFA500; border: 1px solid black; margin-right: 5px;"></span> 10 - 14.9 | <span style="display: inline-block; width: 15px; height: 15px; background-color: #800080; border: 1px solid black; margin-right: 5px;"></span> 125 - 149.9 |
| <span style="display: inline-block; width: 15px; height: 15px; background-color: #FF8C00; border: 1px solid black; margin-right: 5px;"></span> 15 - 19.9 | <span style="display: inline-block; width: 15px; height: 15px; background-color: #4B0082; border: 1px solid black; margin-right: 5px;"></span> 150 - 199.9 |
| <span style="display: inline-block; width: 15px; height: 15px; background-color: #FF4500; border: 1px solid black; margin-right: 5px;"></span> 20 - 24.9 | <span style="display: inline-block; width: 15px; height: 15px; background-color: #0000FF; border: 1px solid black; margin-right: 5px;"></span> 200 +       |
| <span style="display: inline-block; width: 15px; height: 15px; background-color: #FF0000; border: 1px solid black; margin-right: 5px;"></span> 25 - 29.9 |  |
| <span style="display: inline-block; width: 15px; height: 15px; background-color: #FF0000; border: 1px solid black; margin-right: 5px;"></span> 30 - 34.9 |  |
| <span style="display: inline-block; width: 15px; height: 15px; background-color: #FF0000; border: 1px solid black; margin-right: 5px;"></span> 35 - 39.9 |  |
| <span style="display: inline-block; width: 15px; height: 15px; background-color: #FF0000; border: 1px solid black; margin-right: 5px;"></span> 40 - 44.9 |  |
| <span style="display: inline-block; width: 15px; height: 15px; background-color: #FF0000; border: 1px solid black; margin-right: 5px;"></span> 45 - 49.9 |  |
| <span style="display: inline-block; width: 15px; height: 15px; background-color: #FF0000; border: 1px solid black; margin-right: 5px;"></span> 50 - 59.9 |  |
| <span style="display: inline-block; width: 15px; height: 15px; background-color: #FF0000; border: 1px solid black; margin-right: 5px;"></span> 60 - 74.9 |  |
| <span style="display: inline-block; width: 15px; height: 15px; background-color: #FF0000; border: 1px solid black; margin-right: 5px;"></span> 75 - 99.9 |  |

# Santa Clara County



- 10 minute walk (2200 ft)
- 20 minute walk (4400 ft)

## Population Density

1 - 873	17136 - 25368
874 - 1893	25369 - 37859
1894 - 2801	37860 - 67311
2802 - 3613	
3614 - 4395	
4396 - 5359	
5360 - 6526	
6527 - 7892	
7893 - 9521	
9522 - 11654	
11655 - 14256	
14257 - 17135	

# Citations and Sources

All bus stop points  
© OpenStreetMap contributors  
<https://www.openstreetmap.org/copyright>

## Contra Costa County

U.S. Census Bureau (2013-2017).

Total Population American Community Survey 5-year estimates.

Retrieved from <https://censusreporter.org/data/table/?>

table=B01003&geo\_ids=05000US06013,150%7C05000US06013&primary\_geo\_id=05000US06013  
&

Household Income in the Past 12 Months (In 2017 Inflation-adjusted Dollars)  
American Community Survey 5-year estimates.

Retrieved from <https://censusreporter.org/data/table/?>

table=B19001&geo\_ids=05000US06013,150%7C05000US06013&primary\_geo\_id=05000US06013

## Alameda County

U.S. Census Bureau (2013-2017).

Total Population American Community Survey 5-year estimates.

Retrieved from <https://censusreporter.org/data/table/?>

table=B01003&geo\_ids=05000US06001,150%7C05000US06001&primary\_geo\_id=05000US06001  
&

Household Income in the Past 12 Months (In 2017 Inflation-adjusted Dollars)  
American Community Survey 5-year estimates.

Retrieved from <https://censusreporter.org/data/table/?>

table=B19001&geo\_ids=05000US06001,150%7C05000US06001&primary\_geo\_id=05000US06001

## Santa Clara County

U.S. Census Bureau (2013-2017).

Total Population American Community Survey 5-year estimates.

Retrieved from <https://censusreporter.org/data/table/?>

table=B01003&geo\_ids=05000US06085,150%7C05000US06085&primary\_geo\_id=05000US06085  
&

Household Income in the Past 12 Months (In 2017 Inflation-adjusted Dollars)  
American Community Survey 5-year estimates.

Retrieved from <https://censusreporter.org/data/table/?>

table=B19001&geo\_ids=05000US06085,150%7C05000US06085&primary\_geo\_id=05000US06085

